



SIMPLY HOMES

Bedwell Hall

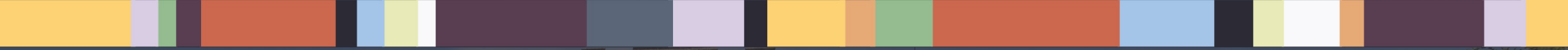
Essendon AL9 6GJ





Bedwell Hall

Essendon AL9 6GJ





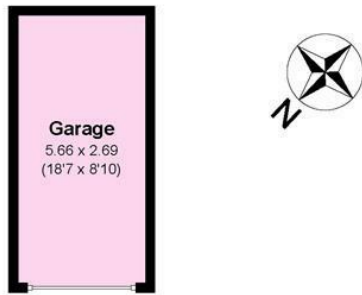


- Bedwell Hall -
- Ground Floor -
Communal Entrance Lobby
Lift Access
- First Floor -
Bedroom One
Walk-in Wardrobe
En-suite Bathroom
- Second Floor -
Entrance Hallway
Kitchen/Breakfast Room
Dining Room
Cloakroom
- Third Floor -
Landing
Bedroom Two
En-suite
Utility Cupboard
Store Room
Bedroom Three
En-suite
- Exterior -
Communal Grounds
Allocated Parking
Garage

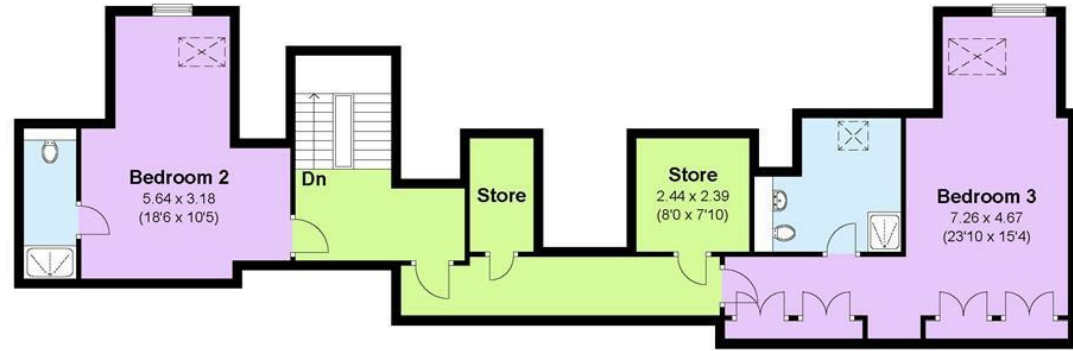




Garage
Approx. 15.20 sq. metres (163.61 sq. feet)



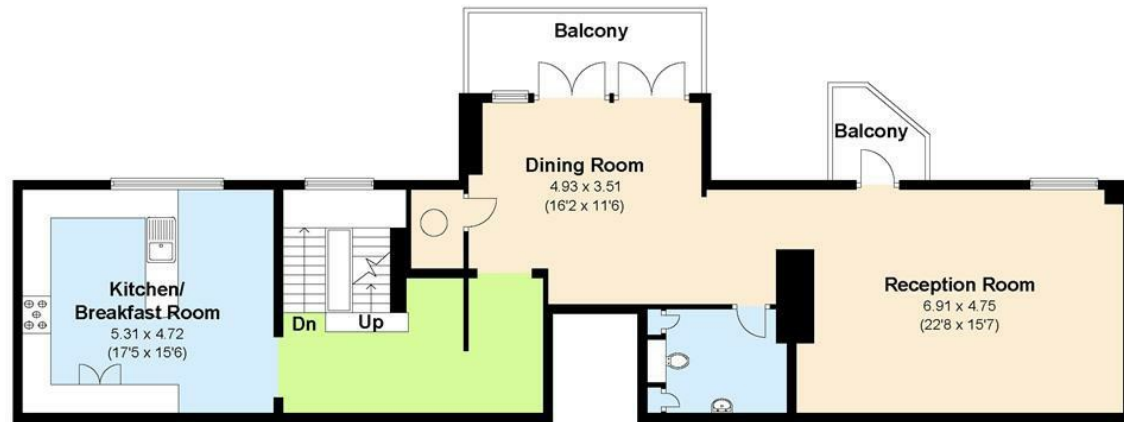
Second Floor
Approx. 88.60 sq. metres (953.68 sq. feet)



Ground Floor
Approx. 66.20 sq. metres (712.57 sq. feet)



First Floor
Approx. 113.90 sq. metres (1226.00 sq. feet)



Total area: approx. 283.9 sq. metres (3055.87 sq. feet) (Including Garage)



Please ensure this door is closed except at all times. Thank you.









SIMPLY HOMES

115 Fore Street | Hertford | SG14 1AS | 01992 558 557 | sales@simply-homes.co.uk | simply-homes.co.uk | Find us on

